

SDF RWY 18

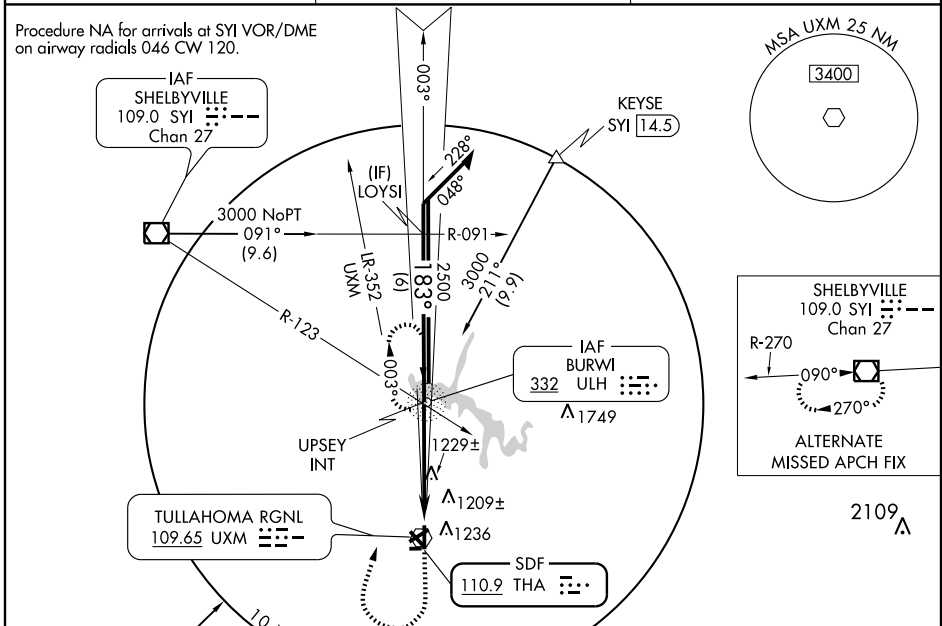
TULLAHOMA RGNL/WM NORTHERN FIELD (THA)

SDF THA	APP CRS	Rwy Idg	5002
110.9	183°	TDZE	1082
		Apt Elev	1083

When local altimeter setting not received, use Nashville Intl altimeter setting and increase all MDA 200 feet, increase S-18 Cat. C visibility 3/4 mile, Cat. D 1/2 mile and Circling Cat. C visibility 1/4 mile, Cat. D 1/2 mile. Inoperative table does not apply to S-18 Cat. C when using Nashville Intl. altimeter setting.

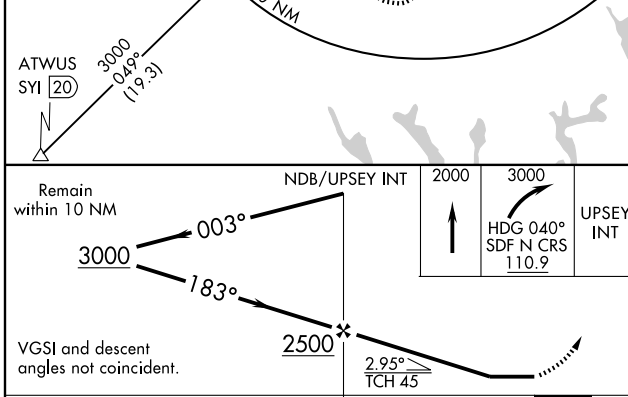
ODALS MISSED APPROACH: Climb to 2000 then climbing right turn to 3000 via heading 040° and THA SDF N course to UPSEY INT and hold.

AWOS-3 128.325	MEMPHIS CENTER 126.75 353.5	UNICOM 123.0 (CTAF)
--------------------------	---------------------------------------	-------------------------------



SE-1, 30 JUL 2009 to 27 AUG 2009

SE-1, 30 JUL 2009 to 27 AUG 2009



CATEGORY	A	B	C	D
S-18	1480-3/4	398 (400-3/4)		1480-1 1/4 398 (400-1 1/4)
CIRCLING	1540-1	457 (500-1)	1540-1 1/2 457 (500-1 1/2)	1640-2 557 (600-2)

MIRL Rwy 18-36	
REIL Rwy 18 and 36	
FAF to MAP 4.4 NM	
Knots	60 90 120 150 180
Min:Sec	4:24 2:56 2:12 1:46 1:28

SDF RWY 18